

April 2024

TEXAS A&M  
AGRI LIFE  
EXTENSION



# CONNECTION

PARKER COUNTY | 4-H



Educational  
Magazine

18 U.S.C. 707

Texas A&M AgriLife Extension provides equal opportunities in its programs and employment to all persons, regardless of race, color, sex, religion, national origin, disability, age, genetic information, veteran status, sexual orientation, or gender identity. The Texas A&M University System, U.S. Department of Agriculture, and the County Commissioners Courts of Texas Cooperating.

Individuals with disabilities who require auxiliary aid, service, or accommodation in order to participate in Extension sponsored meetings are encouraged to contact the County Extension office at 817-598-6172 at least 2 weeks in advance to determine how reasonable accommodations can be made.



HELLO

SPRING

Important Dates.....	Page 4
Parker County 4-H.....	Page 5
▪ Beekeeping Essay Contest	
▪ Water Ambassador	
▪ CORE Academy Information	
▪ Record Book Information	
▪ Parker Co. 4-H PLA	
PCLIA News .....	Page 11
▪ PCLIA Important Dates	
▪ PCLIA Market Lamb, Market Goat, Market Swine and Dairy Heifer Tag Orders	
▪ PCLIA Youth Fair Information	
▪ PCLIA Market Rabbit Information	
▪ 2024 PCLIA Stock Show Schedule	
District 3 4-H.....	Page 16
▪ D3 4-H Events Calendar	
4-H Consumer Decision Making.....	Page 18
▪ D3 4-H Consumer Contest Registration	
4-H Dog Project.....	Page 19
▪ 2024 Texas 4-H Rules and Guidelines	
▪ Tarrant Co. Dog Show	
▪ Texas 4-H Dog Show at a Glance	
4-H Entomology Project.....	Page 23
▪ Project Meeting Sign Up	
4-H Fashion and Interior Design Project.....	Page 25
▪ 4-H Fashion Project Meeting Sign-up	
▪ 23-24 Parker Co. 4-H Fashion Project Activities	
4-H Food and Nutrition Project.....	Page 29
▪ Project Meeting Sign Up	
▪ Corn	
4-H Horse Project.....	Page 32
▪ 2024 Texas 4-H Horse Show Rules and Guidelines	
▪ Validation Information	
▪ Parker Co. 4-H Horse Show, Show Bill	
4-H Livestock Project.....	Page 35
▪ Important Dates	
▪ Major Stock Show Tag Order Information	
▪ Rabbit Project Information and Meeting Sign Up	
▪ Jackpot Shows	
4-H STEM Project.....	Page 42
▪ Project Meeting Sign Up	
▪ Agriculture Engineering	
4-H Club News.....	Page 44
▪ Aledo 4-H	
▪ Weatherford Day 4-H	

# Important Dates

Specific Meeting Information (location and times) may be found under the respective section of the newsletter. Just click the project in the table of contents and it will flip right to it.

- *April 1st - Validation Deadline for Parker Co. 4-H Horse Show (see Horse)*
- *April 1st - Parker Co. 4-H PLA @6PM @ the Extension Office*
- *April 2nd - PCLIA Alternate Tag-In Weatherford FFA (see PCLIA News for more information and to order tags)*
- *April 2nd - PCLIA Alternate Tag-In Peaster FFA (see PCLIA News for more information and to order tags)*
- *April 3rd - PCLIA Alternate Tag-In Poolville FFA (see PCLIA News for more information and to order tags)*
- *April 3rd - PCLIA Alternate Tag-In Brock FFA (see PCLIA News for more information and to order tags)*
- *April 4th - Major Stock Show Validation Tag Order Deadline (see Livestock)*
- *April 4th - PCLIA Alternate Tag-In Springtown (see PCLIA News for more information and to order tags)*
- *April 4th - Parker Co. 4-H Entomology Project Meeting (see Entomology to RSVP)*
- *April 4th - Parker Co. 4-H Food and Nutrition Project Meeting (see Food and Nutrition to RSVP)*
- ***April 5th - PCLIA Stock Show Entries Due to the Extension Office for all 4-H Members***
- *April 6th - PCLIA Tag In - Market Lamb, Market Goat, Market Swine and Dairy Heifers (see PCLIA News for more information and to order tags)*
- *April 8th - Solar Eclipse (come to the Extension office to get your eclipse glasses)*
- *April 14th - Parker Co. 4-H Horse Show Entry Deadline (see Horse)*
- *April 15th - Parker Co. 4-H STEM Project Meeting (see STEM to RSVP)*
- *April 17th - D3 4-H Roundup and Share the Fun Registration Deadline (See District 3 4-H)*
- *April 18th - Parker Co. 4-H Rabbit Project (see Livestock)*
- *April 20th - Parker Co. 4-H Horse Show (see Horse)*
- *April 23rd - D3 4-H Consumer Decision Making Registration Deadline (see District 3 4-H)*
- *April 27th - Lonesome Dove Showdown (see Livestock)*
- *May 2nd - Parker Co. 4-H Entomology Project Meeting (see Entomology to RSVP)*
- *May 2nd - Parker Co. 4-H Food and Nutrition Project Meeting (see Food and Nutrition to RSVP)*
- *May 4th - PCLIA Market Rabbit Tag-In (see PCLIA News for more information)*
- *May 6th - Parker Co. 4-H Council @6PM @ the Extension Office (check PLA Facebook to confirm)*
- *May 6th - Parker Co. 4-H PLA @6PM @ the Extension Office*
- *May 16th - Parker Co. 4-H Rabbit Project (see Livestock)*
- *May 20th - Parker Co. 4-H STEM Project (see STEM)*
- *May 28th-31st PCLIA Stock Show*



# PARKER CO. 4-H

Parker Co. 4-H PLA (all Parker Co. 4-H parents are welcome to attend)  
Monday, April 1st @6PM @ the Extension Office (Confirm mtg on PLA Facebook)

Parker Co. 4-H Council (all Parker Co. 4-H'ers are welcome to attend)  
Monday, May 6th @6PM @ the Extension Office

Parker Co. 4-H PLA (all Parker Co. 4-H parents are welcome to attend)  
Monday, May 6th @6PM @ the Extension Office (Confirm mtg on PLA Facebook)

# TEXAS 4-H BEEKEEPING ESSAY CONTEST RULES AND GUIDELINES

**DEADLINE:**  
**SUNDAY, APRIL 21, 2024**

Submit Electronically via [Texas 4HOnline](#):

Event : State – 2024 Beekeeping Essay Contest  
Winners will be announced the week of April 29, 2024

The 2024 Essay Topic has been announced by The Foundation for the Preservation of Honey Bees, Inc.

## **Essay Topic: Varietal Honey**

For this essay, a 4-H student should answer these questions:

- What makes a varietal honey? What are some unique varieties?
- How are some of the valuable varieties confirmed to be authentic (e.g., Manuka honey UMF and MGO)?
- What are some culturally or economically important varieties and why are they important?

## **Essay Requirements:**

- Essays must be typewritten or computer-generated on single-sided pages and formatted following standard manuscript format using double-spaced type and 12pt font in a legible font face.
- Essays must encompass the designated topic in 750 to 1,000 words. Word count does not include sources, works cited, or the writer's biographical statement.
- All factual statements and interview references must be cited in a "sources" or "bibliography."
- Essays will be judged on (a) scope of research, 40%; (b) accuracy, 30%; (c) creativity, 10%; (d) conciseness, 10%; and (e) logical development of the topic, 10%.
- On a separate page, please include a brief biographical statement of the writer including mailing address, email address, and phone number.
- Essay must be submitted online via 4HOnline by midnight **Sunday, April 21, 2024**



## **AWARDS:**

Awards will be provided to the top three winners from Texas 4-H:

## **TEXAS CONTEST RULES:**

This contest is open to active 4-H Club members only. Previous Texas winners are eligible to enter the 2024 contest, if they have not placed first, second, or third at the national level in the past.

## **NATIONAL CONTEST INFORMATION:**

<http://preservationofhoneybees.org/essays>

Final judging and selection of the National Winner will be made by the Foundation's Essay Committee, whose decision is final.

- Deadline by states for National Submission is May 1, 2024
- National Winners will be announced by the week of June 15, 2024.
- All National entries become the property of the Foundation and may be published or used as it sees fit. No essays will be returned.
- The three prize-winning essays will be published in ABF Quarterly, the magazine of the American Beekeeping Federation
- All authors of essays submitted to the national competition will receive a relevant book on honey bees, beekeeping, or honey.

## **Cash prizes will be awarded to the top three winners for National:**

- 1st Place: \$750.00
- 2nd Place: \$500.00
- 3rd Place: \$250.00

National Contest Sponsored by: The Foundation for the Preservation of Honey Bees, Inc.

\*\*\*\*\*

For More Information Contact:

Jana Barrett  
Extension 4-H Program Specialist I  
[jcbarrett@ag.tamu.edu](mailto:jcbarrett@ag.tamu.edu)  
979-321-5287



# Texas 4-H Water Ambassadors Program



**Applications Open March 15 - May 1**

Hands-on Learning | Leadership Development | Career Exploration



## Eligibility

Senior level (grades 9-12) 4-H youth in 2024/2025 academic year

Have a genuine interest in natural resources, water stewardship, leadership and service

Participate in the Tier I 4-H2O Leadership Academy (tour) June 9-15, 2024

Commit to at least 40 hours of education and service during the 12-month term

Pay the \$300 program participation fee



**188 STUDENTS**  
have served as 4-H  
Water Ambassadors  
since 2017



**14,150 HOURS**  
ambassador education  
and service

The Texas 4-H Water Ambassadors Program provides youth an opportunity to gain advanced knowledge and develop leadership skills on the science, technology, engineering and management of water in Texas.

## How to Apply

**Step 1:** Download and review application instructions at [www.texas4hwaterambassadors.com/application](http://www.texas4hwaterambassadors.com/application)

**Step 2:** Complete your online application

**Step 3:** Submit two letters of recommendation (must be emailed directly from recommender)



**David W. Smith**

Program Specialist III, Texas A&M AgriLife  
Extension Service  
979-314-8224 | david.smith@ag.tamu.edu

**JUNE**  
**17-21**  
**2024**

**EXPLORE**

*Stephenville, &  
San Angelo  
Areas*

# Mission

**PROVIDE HIGH SCHOOL  
YOUTH AN OPPORTUNITY  
TO EXPLORE CAREER AND  
LEADERSHIP  
OPPORTUNITIES IN A  
DIVERSE GLOBAL  
ECONOMY AS WELL AS  
LEARN ABOUT POST-  
SECONDARY DEGREE  
INSTITUTIONS ACROSS  
TEXAS**



One of the goals of the CORE Academy is to bring awareness to an assortment of possible careers. These careers do not focus on any one discipline. Career tours can be anything from hospitality, tourism, manufacturing, STEM, criminal justice, culinary arts, agriculture & natural resources, to marketing and promotions. The objective is to expose the youth to careers and businesses that they may have never considered.

**\$250**  
With  
Application

Check and Credit Card  
Accepted

**April**  
**15<sup>th</sup>**

Registration  
DEADLINE

**GOALS**

- 5 Day exploration program
- Experience higher education and career choices
- Meet with industry and business professionals to expose youth to variety of career paths.



**Core4H**

**CLICK  
HERE**

**Register**  
**NOW**

Participants that are not selected for the 2024 CORE Academy will be refunded their \$250.





PARKER COUNTY 4-H

# RECORD BOOKS

4-H RECORDBOOKS

**County Record Books Due: Tuesday, June 18, 2024**

## Helpful Links

- [Family Guide to the Texas 4-H Record Book](#)
- [Record Book Score Sheet](#)
- [Record Book Categories](#)
- [Record Book Forms](#) (under General Information)
- [Kayla's Road to the Record Book Short Instructional Videos](#)
  - Please note...the record book format has changed since I filmed these videos, however I feel they are still very helpful in how to break down the process of completing your record book.
  - [Road to the Record Book #1](#)
  - [Road to the Record Book #2](#)
  - [Road to the Record Book #3](#)
  - [Road to the Record Book #4](#)
  - [Road to the Record Book #5](#)
  - [Road to the Record Book #6](#)
  - [Road to the Record Book #7](#)
  - [Road to the Record Book #8](#)
  - [Road to the Record Book #9](#)

# Parker Co. Parent Leader Association

*We Need You!*



## WHAT WE DO

- Support the Extension Office
- Raise funds for camp sponsorships
- Cash for Clovers Scholarship Fundraiser



4-H Parents of Parker County, all are welcome and encouraged to join!

Going to have a senior soon? Come find out more about the PLA 4-H scholarship opportunities!

## JOIN US:

1st Monday of each month @ Extension office 6pm

## MORE INFORMATION

FACEBOOK: PARKER COUNTY 4-H PARENTS GROUP



## PCLIA NEWS

CURRENT INFORMATION REGARDING THE  
2024 PARKER COUNTY STOCK SHOW

YOU ARE ENCOURAGED TO FOLLOW THE PCLIA FACEBOOK PAGE  
FOR THE MOST UP TO DATE INFORMATION

### PCLIA RULE BOOK

### PCLIA FACEBOOK

*If you plan to attend an alternate tag-in listed below, please reach out to the contact listed and give them the # of animals you plan to tag, that way they can make sure they have enough tags.*

- **April 2nd** - 4PM-6PM - Weatherford FFA Alternate Tag-In - Contact Deann Seal 817-851-5352
- **April 2nd** - 4PM-6PM - Peaster FFA Alternate Tag-In - Contact Brooke Diaz 817-613-7897
- **April 3rd** - 4PM-6PM Poolville FFA Alternate Tag-In - Contact Alan Reed 940-704-4366
- **April 3rd** - 4PM-6PM Brock FFA Alternate Tag-In - Contact Dave Marcath 586-531-0366
- **April 4th** - 4PM-7PM Springtown FFA Alternate Tag-In - Contact Chance Kanode 970-371-4621
- **April 5th** - PCLIA Entry Deadline for Parker Co. 4-H Members - Entries submitted to the Extension Office.
- **April 6th** - PCLIA Tag-In - Market Lamb, Market Goat, Market Swine and Dairy Heifer - 8AM-10AM Parker County Sheriff's Posse Grounds (Dance Slab Area)
- **May 4th** - 7AM-9AM - Market Rabbit Tag-In

# PCLIA MARKET TAG ORDERS

\$15/Tag

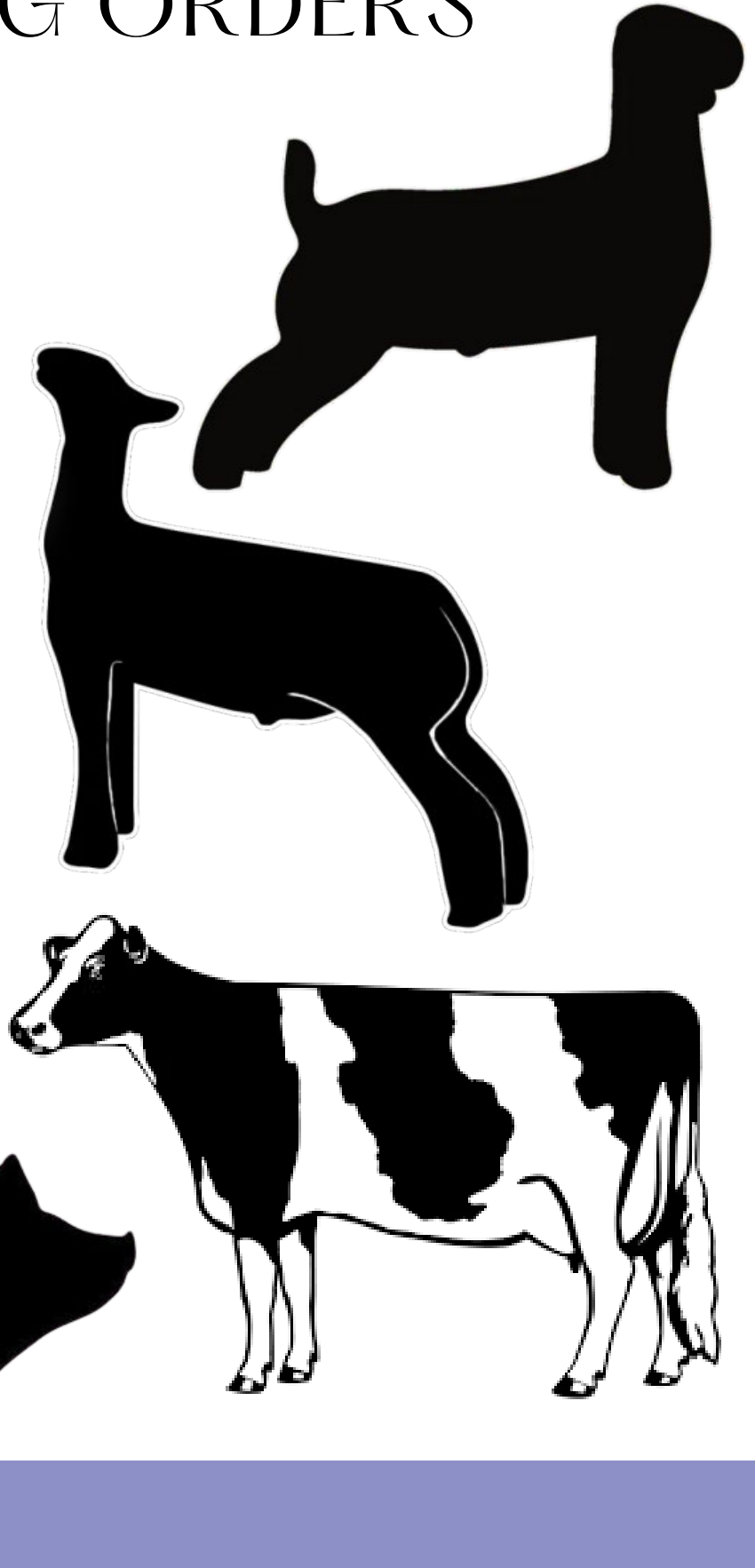
Official Tag-In Saturday, April 6, 2024,  
8AM-10AM, Parker Co. Sheriff's Posse  
Grounds (Dance Slab Area)

(There will most likely be alternate tag-ins  
before April 8th and we will publish that  
information once received. I would also keep  
an eye on the PCLIA Facebook page)

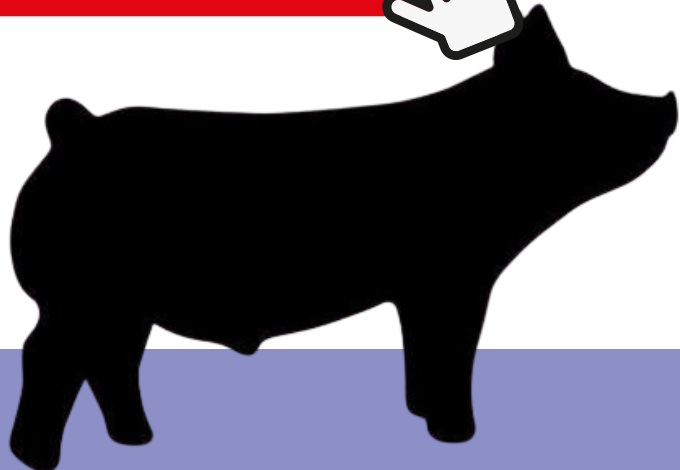
You will be directed to Paypal after you submit  
your order.

\*\*\*Please keep the receipt of your payment  
transaction and be prepared to present at tag-  
in. \*\*\*

The order is not considered final until your  
payment has processed. You do not have to  
create a Paypal acct. if you do not have one,  
just select pay by debit or credit.



**CLICK HERE**



# PCLIA YOUTH FAIR INFORMATION

From Ms. Smesny:

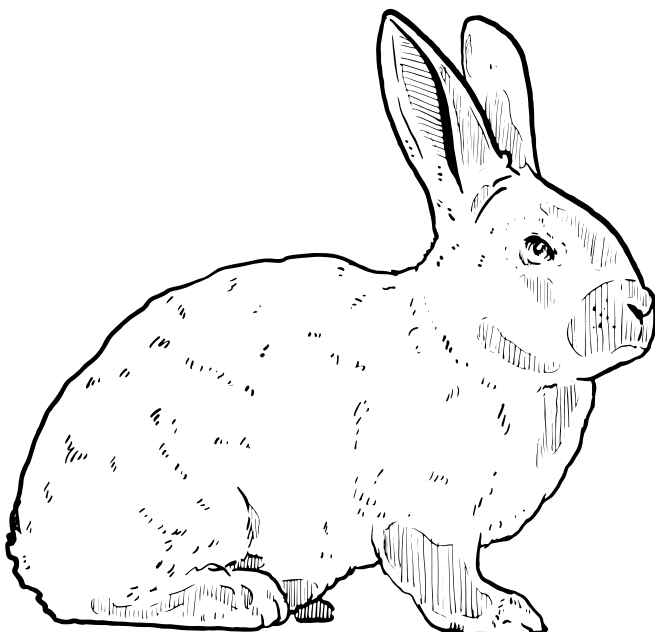
- [2024 PCLIA Youth Fair Entry Link](#)
- Hey everyone! Its year 4 for the youth fair! Youth fair is scheduled for Tuesday May 28. Drop off will begin at the conclusion of the Meat Skillathon.
- [2024 PCLIA Youth Fair Rule Book](#)
- Most are the same as last year with the exception of replacing the floral design competition with a floral cup. Beginning at 3:00 (subject to change due to sheep and heifer weigh in) Exhibitors will be given 1 hour to complete their arrangements at the contest based on their division specifications. All flowers and containers will be provided. Students will need to bring their own tools. Specific questions regarding the floral cup may be directed to Ms. Smesny at [tsmesny@weatherfordisd.com](mailto:tsmesny@weatherfordisd.com) .
- If you have any questions on this please let me know! Super excited to be back competing at the club house this year.

# PCLIA MARKET RABBIT INFORMATION

- For specific question regarding the show, contact the PCLIA Rabbit Superintendent, Lynn Sowders 817-564-3704.
- Market Rabbit Tag-In May 4th 7AM-9AM at the PCLIA Show grounds
- Rabbits must be 70 days old the day of show, Market Rabbit show is May 29th.

## PCLIA RABBIT BREEDER LIST

- Gordon and Happy Carver - Californias and Satins, Weatherford, TX 817-946-8473
- Wyatt and Shelly Hampe - Californias, Springtown, TX 817-291-8331
- Phil Liles - Californias and New Zeland, Bridgeport, TX 817-401-6755
- Duane Coleman - New Zeland, Californias and Champagne, 870-949-1073
- Mallory Goldman - Californias and New Zeland, Alvarado, TX 214-796-2356
- Brian Brodash - Californias and New Zeland, Waller, TX 713-806-2172



## PCLIA 2024 SCHEDULE

ALL TIMES ARE SUBJECT TO CHANGE\*\*\*ALL PENS MUST BE CLEANED WHEN REMOVING ANIMALS AFTER SHOWING.

### Monday, May 27

5PM	Exhibitor Arrival.....	EAST SIDE NEW BARN
6PM	"The Greatest Show on Earth" Opening Ceremonies.....	EAST SIDE NEW BARN

### Tuesday, May 28

7AM	Breeding & Dairy Heifers & all Longhorns Move In.....	CATTLE BARN
7AM	Breeding & Market Sheep Move In.....	ASSIGNED PENS
7AM	Market Poultry Check-In.....	NEW RING
8AM	Market Poultry Show.....	NEW RING
9AM	Fancy Birds in Place.....	NEW RING
9AM	Longhorn Show: Heifers followed by Steers.....	OLD RING
10AM	Fancy Bird Show.....	NEW RING
11AM	Meat Skillathon .....	POSSE BLDG
3PM	Project Fair .....	POSSE BLDG
1PM	Heifer Check In. Last Call Will Be 2PM.....	OLD RING
3PM	Sheep Weigh In. Last Call Will Be 4PM.....	NEW RING

### Wednesday, May 29

7AM	Market & Breeding Rabbit Check-In.....	EAST SIDE NEW BARN
8AM	Breeding Heifer Show followed by Dairy Heifer .....	OLD RING
8AM	Market Rabbit Show Followed by Breeding Rabbit Show.....	EAST SIDE NEW BARN
8AM	Breeding Sheep Show Followed By Market Lambs.....	NEW RING
3PM	Breeding & Market Goats Must Be In Place.....	ASSIGNED PENS
3PM	Market Goat Weigh In. Last Call Will Be 4PM.....	NEW RING
4PM	The Maverick Showmanship.....	NEW RING
5PM	Pigs Can Begin Moving In.....	ASSIGNED PENS

### Thursday, May 30

8AM	Dairy Goat Check-In.....	OLD RING
8AM	Steers Can Begin Moving In.....	ASSIGNED PENS
8AM	Ag Mechanics begin Arrival.....	EAST SIDE NEW BARN
8AM	Breeding Goat Show Followed By Market Goats.....	NEW BARN
9AM	Dairy Goat Show.....	OLD RING
3PM	Swine Must Be In Place.....	ASSIGNED PENS
3PM	Crops Must Be in Place.....	POSSE BLDG
4PM	Crop Show.....	POSSE BLDG
4PM	Steer Weigh In & Must be in Place. Last Call will be at 5PM.....	OLD RING
5PM	Market Swine Weigh In & Classification.....	NEW RING
8PM	All Ag Mechanics must be in place.....	EAST SIDE NEW BARN

### Friday, May 31

8AM	Ag Mech Show.....	EAST SIDE NEW BARN
8AM	Breeding Gilt Show followed by Market Swine.....	NEW BARN
4PM	Steer Show.....	OLD BARN
7PM	Master Showman at Conclusion of Steer Show.....	NEW BARN

### Friday, June 7

9AM	Awards.....	OLD BARN
10AM	Premium Sale Of Champions.....	NEW BARN SALE RING



# DISTRICT 3 4-H

This section will contain links and general information related to District 3 4-H information including District 3 4-H contests and activities

[D3 4-H Events Link](#)



# Calendar

# 2024

\*\*\*Events with a "Q" require county qualification

*January*

Mo	Tu	We	Th	Fr	Sa	Su
1	2	3	4	5	6	7
8	9	10	11	12	13	14
15	16	17	18	19	20	21
22	23	24	25	26	27	28
29	30	31				

*February*

Mo	Tu	We	Th	Fr	Sa	Su
			1	2	3	4
5	6	7	8	9	10	11
12	13	14	15	16	17	18
19	20	21	22	23	24	25
26	27	28	29			

*March*

Mo	Tu	We	Th	Fr	Sa	Su
				1	2	3
4	5	6	7	8	9	10
11	12	13	14	15	16	17
18	19	20	21	22	23	24
25	26	27	28	29	30	31

- January 2024**
- 1st – Reg. Opens Duds to Dazzle (Q)
  - 1st – Reg. Opens Fashion Show (Q)
  - 1st – Reg. Opens Fashion Storyboard
  - 1st – Reg. Opens D3 Round-Up
  - 1st – Reg. Opens Photography (Q)
  - 1st – Reg. Opens Record Book (Q)
  - 1st – Reg. Opens Rifle Pistol
  - 15th – Reg. Opens Horse Judging Contest
  - 15th – Reg. Opens Consumer Decision Making
  - 15th – Reg. Opens Meat Judging

*April*

Mo	Tu	We	Th	Fr	Sa	Su
1	2	3	4	5	6	7
8	9	10	11	12	13	14
15	16	17	18	19	20	21
22	23	24	25	26	27	28
29	30					

*May*

Mo	Tu	We	Th	Fr	Sa	Su
					1	2
3	4	5	6	7	8	9
10	11	12	13	14	15	16
17	18	19	20	21	22	23
24	25	26	27	28	29	30
31						

*June*

Mo	Tu	We	Th	Fr	Sa	Su
					1	2
3	4	5	6	7	8	9
10	11	12	13	14	15	16
17	18	19	20	21	22	23
24	25	26	27	28	29	30

- March 2024**
- 16th – Reg. Closes: Meat Judging
  - 17th – Reg. Closes: Duds to Dazzle
  - 17th – Reg. Closes: Fashion Show
  - 17th – Reg. Closes: Fashion Storyboard
  - 28th – Meat Judging (in Lubbock)
  - 29th – Reg. Closes: Horse Judging Contest

*July*

Mo	Tu	We	Th	Fr	Sa	Su
1	2	3	4	5	6	7
8	9	10	11	12	13	14
15	16	17	18	19	20	21
22	23	24	25	26	27	28
29	30	31				

*August*

Mo	Tu	We	Th	Fr	Sa	Su
					1	2
3	4	5	6	7	8	9
10	11	12	13	14	15	16
17	18	19	20	21	22	23
24	25	26	27	28	29	30
31						

*September*

Mo	Tu	We	Th	Fr	Sa	Su
						1
2	3	4	5	6	7	8
9	10	11	12	13	14	15
16	17	18	19	20	21	22
23	24	25	26	27	28	29
30						

- April 2024**
- Trap Reg TBA
  - Archery Reg TBA
  - 6th - Reg. Closes: Rifle/Pistol
  - 6th - Fashion Show, Duds to Dazzle and Fashion Story Board (Archer City)
  - 12th - Horse Judging (Vernon)
  - 17th – Reg. Ends: D3 Round-Up
  - 17th – Reg. Ends: Photography
  - 20th - Rifle/Pistol Contest (Wichita Falls)
  - 23rd - Reg. Ends: Consumer Decision Making

*October*

Mo	Tu	We	Th	Fr	Sa	Su
						1
2	3	4	5	6	7	8
9	10	11	12	13	14	15
16	17	18	19	20	21	22
23	24	25	26	27	28	29
30	31					

*November*

Mo	Tu	We	Th	Fr	Sa	Su
					1	2
3	4	5	6	7	8	9
10	11	12	13	14	15	16
17	18	19	20	21	22	23
24	25	26	27	28	29	30

*December*

Mo	Tu	We	Th	Fr	Sa	Su
						1
2	3	4	5	6	7	8
9	10	11	12	13	14	15
16	17	18	19	20	21	22
23	24	25	26	27	28	29
30	31					

- May 2024**
- 4th - Trap Contest
  - 6th - Quiz Bowl Contests (Vernon)
  - 8th - D3 4-H Roundup (Vernon)
  - 8th - D3 4-H Consumer Contest
  - 18th - Archery Contest

- June 2024**
- 3rd-6th - State Roundup (College Station)
  - 13th-15th - Teen Leader Lab
  - 19th-21st District 3 Horse Show (Decatur)



# 4-H CONSUMER DECISION MAKING

- April 23rd - D3 4-H Consumer Decision Making Registration Deadline [Click Here to Register](#)
- D3 4-H Consumer Decision Making Contest Information - [Click Here](#)



# 4-H DOG PROJECT

No April Meeting

Please RSVP by Noon the day before the meeting  
for planning purposes.

[2024 Texas 4-H Dog Show Rules](#)



## Save the Date

---

---



## Tarrant County 4-H Dog Show

---

Saturday April 6<sup>th</sup>, 2024

held in Fort Worth

---

Hawaiian Themed.

---

### Events include.

Obedience    Rally    Tricks  
Individual Drill

If interested contact Renee at

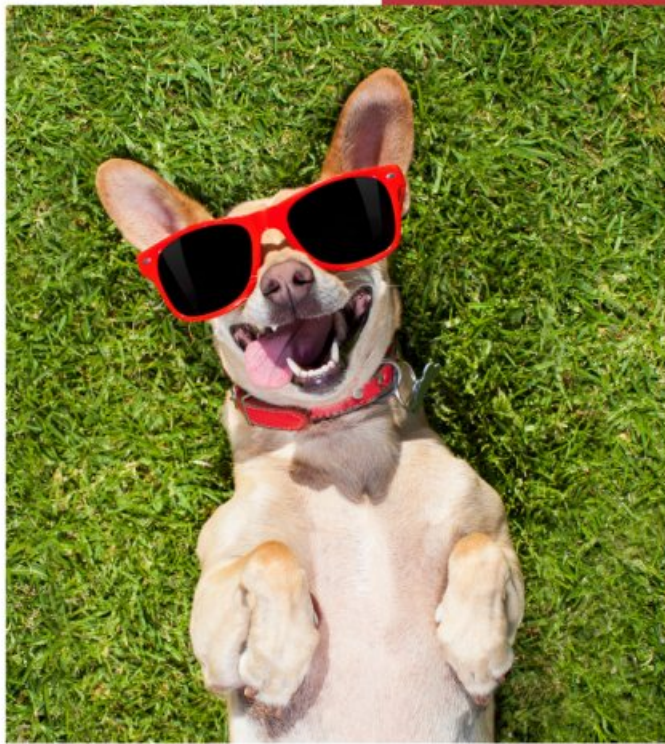
[Evpoodle@gmail.com](mailto:Evpoodle@gmail.com) or 682-344-7581.

Texas A&M AgriLife Extension provides equal opportunities in its programs and employment to all persons, regardless of race, color, sex, religion, national origin, disability, age, genetic information, veteran status, sexual orientation, or gender identity.

The Texas A&M University System, U.S. Department of Agriculture, and the County Commissioners Courts of Texas Cooperating

# TEXAS 4-H DOG SHOW CLASSES AT A GLANCE

Note: The 2023-2024 Texas 4-H Dog Show Rules have not yet been released. The information below is based off of the 22-23 Rules and is subject to change.



## Canine Good Citizen

- The Canine Good Citizen testing is a non-competitive opportunity for exhibitors to demonstrate their dog's basic good manners and earn the Canine Good Citizenship certificate through AKC. Started in 1989, the CGC Program is designed to reward dogs who have good manners at home and in the community. The CGC Program is a program that stresses responsible pet ownership for owners and basic good manners for dogs. All dogs who pass the 10-step CGC test may receive a certificate from the American Kennel Club. Testing is subject to certified judge availability.
- The 10 Steps are...
  1. Accepting a friendly stranger
  2. Sitting politely for petting
  3. Appearance and grooming
  4. Out for a walk (walking on a loose lead)
  5. Walking through a crowd
  6. Sit and sown on command and staying in place
  7. Coming when called
  8. Reaction to another dog
  9. Reaction to distraction
  10. Supervised separation

## TEXAS 4-H DOG SHOW CLASSES

### Photography

A detailed description of categories, size requirements and the photo submission process will of course be included in the 23-24 Rule Book.

- Dog - Still Life
- Dog - Active
- Storyboard
- Theme
- Funny Dog

### Costume

Divided into age divisions - Junior, Intermediate and Senior. Judged on...

- Creativity - produce or create (not purchase) something unique, new and original.
- Showmanship - Personality, poise, confidence, expression and stage presence.
- Costuming - Appropriate for age and youth audience.
- Material Chosen - Appropriate for audience and the ability of the performer.
- Audience Appeal - Evokes reaction from audience that is desired from the performance.

### Conformation

- Dog is judged on breed standards
- Shown in group classes
- Purebred dogs do not have to be registered
- Non-purebred dogs will be shown by weight

### Showmanship

- Exhibitor is judged on ability to handle a dog
- Patterns may be directed
- Exhibitors may be asked questions regarding: dog anatomy, breeds, health and nutrition and 4-H trivia (resources found on Texas 4-H Dog Project page)
- Broken into age divisions and skill levels

# TEXAS 4-H DOG SHOW CLASSES CONTINUED

## Rally

- A series of signs give instructions for exhibitor to follow
- More relaxed than obedience
- May give hand and voice commands
- Broken into skill level and age division

## Obedience

- A series of commands (signs or verbal, depending on level of experience) will provide direction to exhibitor
- Must choose between hand or voice commands, cannot use both
- Broken into skill level and age division

## Drill

- Dog/Handler teams choreographed to music
- Exhibit obedience commands
- 5 minute routine

## Freestyle Drill

- Props are allowed
- 1-3 or 4 or more members

## Traditional Drill

- No props
- Minimum 3 members

## Tricks

- Set list of tricks and point values
- Exhibitors handle dogs through 4 tricks from the list

## Dog Skill-a-thon

Consists of a series of stations that are designed to test the exhibitor's dog science knowledge and skills.

- Individual contest
- Age divisions
- Don't have to show a dog to compete
- Stations formatted as matching, multiple choice, short answer etc.
- Topics include but not limited to:
  - animal behavior, care, safety and restraint
  - health and disease
  - anatomy, physiology and conformation
  - breed id
  - famous dogs/ working dogs / dog sports
  - nutrition and feeding
  - housing, facilities and training
  - genetics, reproduction and management of breeding animals
  - records management

## Dog Olympics

Olympics is designed to encourage participation in the dog project and attend state dog show even if they are not yet ready to participate in the other higher level events.

- Push ups - the goal is for the dog to perform as many "push ups" as possible in 1 min. A push up begins with the dog sitting, then lying down, and coming back up to a sit.
- Marathon Sit - the goal for this event is for the dog to sit and stay for as long as possible.
- Treat Toss - the dog that can catch as many treats as possible in 1 min.
- Tail Wagging - for the dog to wag their tail as many times as possible in 30 seconds.
- 20 Yard Dash - for the dog to run as fast as possible to their owner 20 yards away.



# 4-H ENTOMOLOGY PROJECT

April Insect Catching Day  
[Click Here to RSVP](#)

Thursday, May 2nd @6PM @ the Extension Office  
RSVP Required  
[Click Here to RSVP](#)

Please RSVP by Noon the day prior to the project meeting

# PARKER CO. *Entomology*

**NO APRIL MEETING**

PLEASE USE THE LINK TO SIGN UP FOR AN INSECT CATCHING DAY IN LATE APRIL. EMAILS WILL BE SENT TO THOSE INTERESTED.

**MAY MEETING:**  
*butterfly pinning*



Adult Leader: Tiffany Beasley

Teen Leader: Emma Hauprich

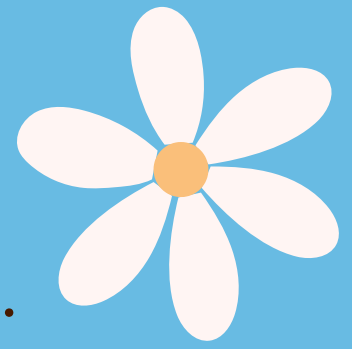




# 4-H FASHION AND INTERIOR DESIGN PROJECT

Monday, April 22nd @6PM @ the Extension Office  
RSVP Required  
[Click Here to RSVP](#)

# Fashion and Interior Design



April  
Newsletter



## Teacher Gifts

The end of the school year is arriving soon and with it means finding gifts for teachers! Having crafting skills is not just great for making gifts for you and your family but you can also make homemade presents for other people. A gift is very special to someone but a homemade gift makes it even more special because it shows that you took the time and effort to make that gift. It shows that you care about that person. Here is one cute idea that you can make as a teacher's gift or as a birthday present!

**NEXT MEETING IS  
APRIL 22! REMEMBER  
TO RSVP!**

# SEWING QUOTES

IF SOMEONE TELLS YOU THAT  
YOU HAVE ENOUGH FABRIC  
STOP TALKING TO THEM.

YOU DON'T NEED THAT KIND  
OF NEGATIVITY IN YOUR LIFE!

## Steps for Quilting

1. Always buy new fabric,  
no matter how much you  
already have.

2. Sew all day and night.

3. And always start a new  
quilt before the last one is  
finished.

## Lip Balm Holder

1. Cut out 2 pieces of fabric using the template below
2. Place pieces right sides together then pin.
3. Sew around all sides leaving a hole large enough to flip.
4. Flip fabric and fold the fabric. Make sure the pocket is large enough that lip balm can fit in it.
5. Sew both sides of the pocket down making sure that the whole is sewn up.
6. At the top of the holder take the key ring and fold the fabric around the key ring.
7. Sew the fabric together to make sure the key ring stays hooked onto the holder.
8. Enjoy!

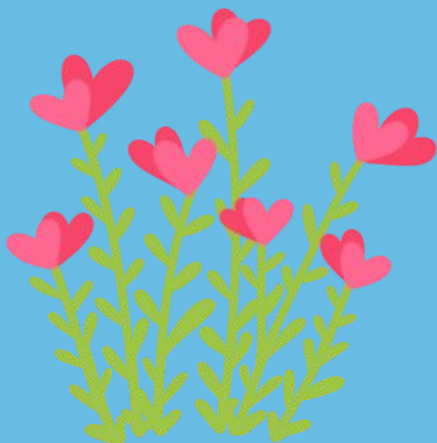


### How To Make A Lip Balm Holder ★ A Rose Tinted World

How To Make A Lip Balm Holder - chapstick pouch that clips to your keys, bag or belt. A great gift or idea ...

[arosetintedworld.co.uk](http://arosetintedworld.co.uk)

<https://www.arosetintedworld.co.uk/wp-content/uploads/2021/01/LipBalmHolderTemplate.pdf>





# 23-24 Sewing Projects

Enjoy life while you're still young!



**September-** Hair clips, which we will be donating to Operation Christmas Child.

**October-** We will be sewing fall tree pillow cases.

**November-** We will be make some ornaments that would be great for Christmas gifts or to hang on your tree.

**December-** (No meeting)

**January-** We will be making Valentines Day handwarmers to keep you warm in the cold winter.

**February-** Parker County Fashion Show!

**March-** Duds to Dazzle practice.

**April-** For the last meeting we will be making a lip balm holder that would be great for teacher gifts!

\*All year long we will be working on reading a pattern and individual projects



*"Smiles are always in fashion"*



# 4-H FOOD AND NUTRITION PROJECT

MEETINGS AT THE EXTENSION OFFICE  
(CLICK THE MEETING TO RSVP)

## RSVP IS REQUIRED

- \$5 will be collected from each participant at the meeting to cover the cost of supplies, please do not sign up unless you plan to attend the meeting
- Sign-up will close the Monday before the meeting by Noon
- Bring \$5/participant to the Food and Nutrition Meeting
- Click the date of the meeting you'd like to sign up

[Thursday, April 4th - Clovers and 4-H'ers @6PM @ Extension Office](#)

[Thursday, May 2nd - Clovers and 4-H'ers @6PM @ Extension Office](#)

# Ingredient of the WEEK



Loaded with insoluble fiber, which means it is digested slowly and doesn't cause an unhealthy spike in blood sugar



contains many B vitamins, essential minerals, including zinc, magnesium, copper, iron and manganese



Corn is a starchy vegetable so people with diabetes need to keep in mind that a half cup of corn contains 15 grams of carbohydrate and counts as one carbohydrate food choice



# CORN



**DINNER  
TONIGHT**

Source: The Mayo Clinic



# SUNSHINE CORN & BELL PEPPER SALAD

## Corn and Bell Pepper Salad

MARCH 20, 2024 BY DINNER TONIGHT

Light up your week with this bright and colorful salad! Looking to add more veggies to your meals? Try this Sunshine Corn and Bell Pepper Salad – the perfect summer side dish! Sweet corn and bell peppers make this the taste of sunshine on a plate!

### Instructions

1. Wash hands and clean preparation area.
2. Combine all dressing ingredients into a bowl and mix. Set aside.
3. In a large bowl combine all other salad ingredients.
4. Pour mixed dressing over other salad ingredients and mix well.
5. Serve immediately.

## Ingredients

### Dressing

- 1/4 cup olive oil
- 1/4 cup diced red onion
- 1/4 cup white wine vinegar
- 1/4 cup cilantro chopped
- 1/4 teaspoon black pepper
- 1/4 teaspoon smoked paprika

### Salad

- 4 cups Corn off the cob or frozen (defrosted)
- 1 cup cherry tomatoes sliced
- 1 green bell pepper diced
- Zest of 1 lemon about 3 tablespoons
- juice of 1 lemon about 3 tablespoons
- 1/2 avocado diced
- 1/3 cup green onion diced

Nutrition Facts	
8 servings per container	
Serving size	1 cup (168g)
Amount per serving	
<b>Calories</b>	<b>170</b>
	% Daily Value*
Total Fat 9g	12%
Saturated Fat 1.5g	8%
Trans Fat 0g	
Cholesterol 0mg	0%
Sodium 10mg	0%
Total Carbohydrate 24g	9%
Dietary Fiber 4g	14%
Total Sugars 5g	
Includes 0g Added Sugars	0%
Protein 3g	
Vitamin D 0mcg	0%
Calcium 16mg	2%
Iron 1mg	6%
Potassium 416mg	8%

\*The % Daily Value tells you how much a nutrient in a serving of food contributes to a daily diet. 2,000 calories a day is used for general nutrition advice.



# 4-H HORSE PROJECT

## PARKER CO. 4-H MOUNTED HORSE PROJECT MEETINGS

- Must provide your own horse
- Participants must be 8 and in the 3rd grade
- Must be currently enrolled in Parker Co. 4-H

### **RSVP IS REQUIRED TO RECEIVE ADDRESS**

**Current Proof of Negative Coggins is Required at Every Meeting**

Novice Horse Project Meetings: For youth new to horse project, limited riding experience, and have never competed in a horse show.

Advanced Horse Project Meetings: For youth that have experience in horse competition settings and have shown, can comfortably lope/canter and can consistently identify and pick up the correct lead.

## Important Dates

### Novice Horse Project Meetings - March

Contact Lisa Keefe 281-593-9382 for more information

- Every Tuesday @6PM @ the Youth Center

### Advanced Horse Project Meetings - March

Contact Susan McCulloch 817-726-5743 for more information

- April 2nd @6PM
- April 16 @6PM
- April 30th @ 6PM

- **\*\*\*NEW\*\*\* 2024 Texas 4-H Horse Show Rules and Guidelines**
- **April 1** - Horse Validation Deadline for Parker County 4-H Horse Show
- **April 14** - Parker Co. 4-H Horse Show Entry Deadline - [Click Here to Enter](#)
- **April 20** - Parker County 4-H Horse Show



# TEXAS 4-H HORSE SHOW RULES AND GUIDELINES

# Important Info

## Rule changes include:

- Mules and Donkeys are no longer prohibited from participating in the show
- Dogs will not be allowed on the show grounds for the safety of exhibitors
- White or buff colored shirts are no longer a requirement in Stock Horse Horsemanship or Stock Horse Showmanship
- Exhibitors are no longer limited to two horses (one mare and one gelding) in the halter division. An exhibitor can now show a mare in the 5 and over class and another mare in the 4 and under class. Exhibitors are still limited to one entry for each class.
- Motorized vehicles will be allowed on the show grounds with restrictions (see rules for restrictions)
  
- There are also several other minor rule revisions which are listed in red text in the rule book. Also, due to the growth of the State 4-H Horse Show, it has become necessary for us to extend our schedule by one day. We are currently working to revise the schedule of classes accordingly and will have that available on the website by the end of the month.

## Validation Information (in order to show in the Parker Co. 4-H Horse Show the horse(s) must be validated by April 1st) -

- ALL horses must be validated/re-validated each year. There is no limit to the number of horses that can be validated. You are encouraged to validate all horses that may possibly be shown at district and/or state shows. Only state validated horses can be substituted in the event that a validated horse becomes unusable due to lameness, sickness, etc.
- The family can submit payment of \$10.00 per horse (\$20.00 after April 15th, or \$250 from May 1st to May 5th), in the form of a credit card ONLY.
  - From March 1 – April 15, the validation cost for each horse is \$10.00. The \$10.00 cost is only guaranteed if the animal validation is approved by the county office by the April 15th deadline and the payment is processed.
  - From April 16 – May 1, the validation cost for each horse is \$20.00. The \$20.00 cost is only guaranteed if the animal validation is approved by the county office by the May 1st deadline and the payment is processed.
- Each validation must include front view, right side view, and left side view images. The entire horse should be included in the photo and markings should be clearly visible.
- If the horse is registered, a copy of the registration papers must be uploaded. These papers must list the 4-Her, sibling, parent, stepparent, grandparent or legal guardian as the current owner. If the ownership is in the process of being transferred, please list “pending” in the registration number area. Once the updated registration papers have been received, please email me a copy of the new papers and I will add it to the validation online.
- Lease horses are eligible to be validated and shown at District and State 4-H Horse Shows. An official Texas 4-H Horse Lease Agreement must be signed by the exhibitor, horse owner, and the supervising County Extension Agent. The lease period must include, at minimum, May 1st to August 31st of the current 4-H year. The lease agreement form can be found at <https://texasyouthlivestock.com/horse-validation/> and must be uploaded in 4-H Online at the time of validation.
- Image uploads in [4-H Online](#) must be in the form of a .jpg, .gif or .png file.
- Families should validate each horse only one time. Once the horse is validated, any sibling within that family in 4-H Online is eligible to show the horse at their district show and/or the State 4-H Horse Show.
- Youth validating a futurity horse must be at least 12 years of age (as of Sept. 1, 2023) and at least in the 6th grade.

Validation walk-through guide for families: [https://texas4-h.tamu.edu/wp-content/uploads/4honline\\_family\\_guide\\_horse\\_validation\\_2023.pdf](https://texas4-h.tamu.edu/wp-content/uploads/4honline_family_guide_horse_validation_2023.pdf)

- For additional one-pagers and other resources, please visit <https://texasyouthlivestock.com/horse-validation/>
- Validation walk-through video: <https://youtu.be/OPoOmyC1kTk>
- The family will receive an automated message from 4-H Online when the County Extension Agent has approved the horse at the county level. This approval does NOT guarantee eligibility. After it is approved at the county level, the validation will then be reviewed at the state level. The family will be notified by June 1st if there are any issues with the validation at the state level.
  - We will begin to review validations at the state level on March 1st and will be working closely with families and agents to fix errors as quickly as possible prior to the validation deadline.

**PARKER  
COUNTY  
4-H**

**SATURDAY,  
APRIL 20, 2024**

**8AM Packet Pick-Up Opens  
9AM Start**

# **HORSE SHOW**

(if you're in classes 1-10 try to be there by 8AM)

## **Judge: Karen Doby**

All Exhibitors Must be Parker County 4-H Members  
All Horses Must be Validated by April 1, 2024 in Texas 4-H Online  
Follow Texas 4-H Horse Show Rules and Regulations  
Entry Deadline: April 14, 2024

### **CLASS ORDER**

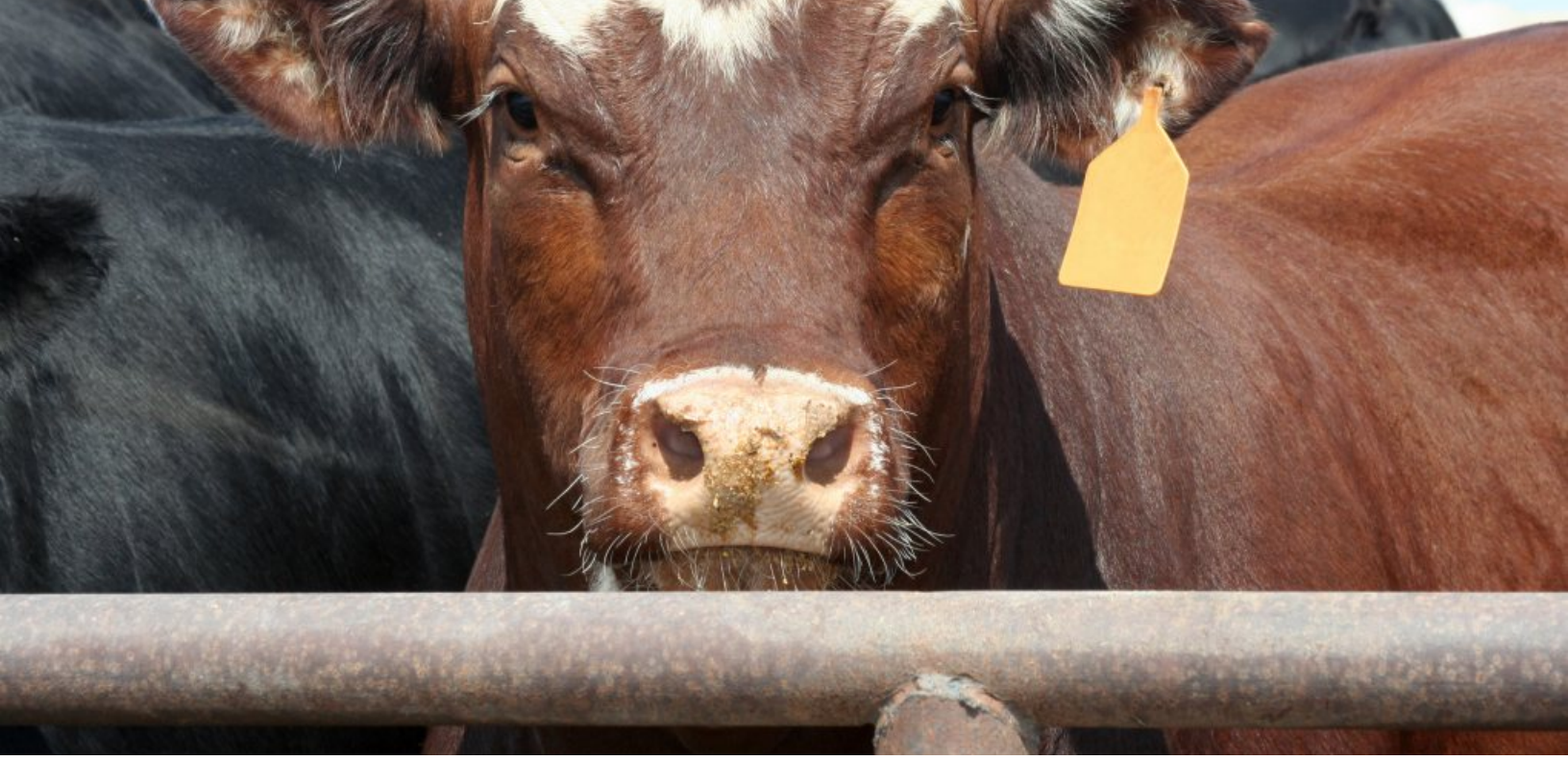
1. Halter Mares 4 and Under
2. Halter Mares 5 and Over
3. Grand/Reserve Champion Mare
4. Halter Geldings 4 and Under
5. Halter Geldings 5 and Over
6. Grand/Reserve Champion Gelding
7. Showmanship (Senior then Junior)
8. Stock Horse Showmanship (Senior then Junior)
9. Hunter Showmanship (Senior then Junior)
10. Hunter Under Saddle (Senior then Junior)
11. Hunt Seat Equitation (Senior then Junior)
12. Hunt Seat Versatility (Senior then Junior)
13. Walk Trot Western Trail (Senior then Junior)
14. Western Trail (Senior then Junior)
15. Stock Horse Trail (Senior then Junior)
16. Walk Trot Western Pleasure (Senior then Junior)
17. Western Pleasure (Senior then Junior)
18. Walk Trot Western Horsemanship (Senior then Junior)
19. Western Horsemanship (Senior then Junior)
20. Stock Horse Horsemanship (Senior then Junior)
21. Stock Horse Pleasure (Senior then Junior)

22. Reining (Senior then Junior)
23. Cow Boxing (Senior then Junior)
24. Barrels (Senior then Junior)
25. Poles (Senior then Junior)
26. Stakes (Senior then Junior)
27. Goat Tying (Senior then Junior)
28. Heading (Senior then Junior)
29. Heeling (Senior then Junior)
30. Breakaway (Senior then Junior)

### **BUCKLES:**

Overall High Point Junior  
Overall High Point Senior  
Western Performance Division High Point JR and SR  
English Division High Point JR and SR  
Speed Events Division High Point JR and SR  
Stock Horse Division High Point JR and SR  
Roping Division High Point JR and SR

For Questions Contact Parker County 4-H @ 817-598-6172  
Location: Parker County Arena, 1010 FM 1885, Weatherford, TX 76088



# 4-H LIVESTOCK

- **April 2nd** - PCLIA Alternate Tag-In Weatherford FFA (see PCLIA News for more information and to order tags)
- **April 2nd** - PCLIA Alternate Tag-In Peaster FFA (see PCLIA News for more information and to order tags)
- **April 3rd** - PCLIA Alternate Tag-In Poolville FFA (see PCLIA News for more information and to order tags)
- **April 3rd** - PCLIA Alternate Tag-In Brock FFA (see PCLIA News for more information and to order tags)
- **April 4th** - Noon - Major Stock Show tag orders due
- **April 4th** - 4PM-7PM Springtown FFA Alternate Tag-In (**see PCLIA News to Order Tags**)
- **April 5th** - PCLIA Entry Deadline for Parker Co. 4-H Members - Entries submitted to the Extension Office.
- **April 6th** - PCLIA Tag-In - Market Lamb, Market Goat, Market Swine and Dairy Heifer - 8AM-10AM Parker County Sheriff's Posse Grounds (Dance Slab Area) see **PCLIA News to Order Tags**
- **April 6th - 7th** - Garner FFA Livestock Show
- **April 13th-14th** - Weatherford FFA Showdown
- **April 18th** - Parker Co. 4-H Rabbit Project Meeting [Click HERE to RSVP](#)
- **April 27th** - Parker Co. 4-H Lonesome Dove Showdown
- **May 4th** - 7AM-9AM PCLIA Market Rabbit Tag-In

# MAJOR STOCK SHOW TAG ORDERS

**2024-2025 Major Stock Show Tag Orders - Due by Noon April 4, 2024 (click link below to order)**

24-25 Parker Co. Major Stock Show Validation Tag Orders for... (This is NOT related to county show in any way shape or form)

- 24-25 ALL Major Steers
- 24-25 Registered Breeding Heifers (October Validation will also occur)
- 2024 State Fair of Texas Lamb and Goat validation (will carry over to 2025 Majors)

[24-25 Parker Co. Major Stock Show Validation Orders Link](#)

Please READ Carefully

Validation orders for:

- 24-25 ALL Major Stock Show - Steers
- 24-25 Registered Breeding Heifers (another will be offered in October. Unused June tag orders will carry over to October) - 1 exhibitor per animal, color copy of papers required. \*\*\*Heifers will now be tagged\*\*\*
- 2024 State Fair of Texas
  - Lambs and goats validated during the 2024 State Fair Validation Period WILL BE ELIGIBLE for 2025 Spring Major Shows. Market animals validated for the 2024 State Fair will carryover for 2025 Spring Major Shows. Once validated, the project MUST stay in the care of the exhibitor that project is validated to; if the exhibitor chooses to sell the project to a new exhibitor, the new exhibitor MUST REVALIDATE the project within the next validation period.
  - Breeding/commercial lamb and goat requirements for STFR. The State Fair of Texas is requiring validation for registered breeding sheep, registered breeding goats, wether/commercial dams, and wether commercial does.
  - Market Lamb - May be validated by family (validation will carry over to 2025 spring majors)
  - Market Goats - May be validated by family (validation will carry over to 2025 spring majors)
  - Wether Dams - May be validated by family - validation good for 3 years unless change of ownership.
  - Wether Does - May be validated by family - validation good for 3 years unless change of ownership.
  - Registered Breeding Sheep - \*\*\*may be family validated if all exhibitors are listed on papers\*\*\*, color copy of papers required at time of validation - validation good for 3 years unless change of ownership.
  - Registered Breeding Boer Goats - \*\*\*may be family validated - all exhibitors must be listed on papers\*\*\* color copy of papers required at time of validation - validation good for 3 years unless a change of ownership.

\*\*\*Please note, all sheep and goat tags (market and breeding) are interchangeable. If you ordered a market lamb tag but got a breeding goat instead you may use it to tag the breeding goat.

\*\*\*Please note, heifer and steer tags are interchangeable. If you ordered a market steer tag but got a heifer instead you may use it to tag the heifer.



# Rabbit Project



## BREED SPOTLIGHT: SILVER FOX

Walter B. Garland developed the Silver Fox breed and was the third breed to be developed in the United States. Originally named the American Heavyweight Silver, the name was changed to Silver Fox in 1929. Though the black and blue color varieties of Silver Fox were originally recognized, the blue variety was later dropped. The Silver Fox is distinguished by the unique standing fur and silver tipped and white hairs shot throughout the coat. These hairs are evenly dispersed giving a sharp, bright look to the fur. – Maximum weight 12 lbs.



## SHOWMANSHIP TIPS:

- Pose Rabbit. When you are told to begin, carefully set your rabbit down on the table. Pose your rabbit on the table with left ear facing the judge, so the judge can see ear tattoo (if applicable). Use correct pose for breed, proper setting of front and hind feet, ears and tail. Describe your rabbit including breed, age, variety and sex.
- Ears for mites, cankers, rips/tears, etc. Open ear using your index finger and second finger with thumb for support behind ear so that the judge can see inside the ear. (you may use one finger.) Do left ear first, then right ear using a 1/2 turn so right ear faces the judge. (Do not drag rabbit, lift rabbit when turning).
- Eyes, left then right eye for proper color or disease. Know proper color for variety/breed and know diseases that affect the eye.
- Nose. Look at/in nose – know what symptoms of disease would be there. Look at insides of legs.
- Teeth. Look at front and bottom teeth. Know what problems affect teeth and know proper bite.
- Front Feet/Toenails. Count correct number on left and right. Proper nail color and pad color.
- Front Legs/Bone. Lift and feel each bone in right and left.
- Back Feet/Toenails. Count correct number on right and left. Know proper color and check hocks.
- Back Legs/Bone. Lift and feel each bone in right and left.
- Know Sex. (Doe – expose vent, Buck – expose penis, check for both testicles. Know possible diseases (make sure the area is clean))
- Tail. Check bone for breaks, straightness and carriage.

## UPCOMING DATES:

Next meeting dates:

All Meetings will be held at 2752 Tin Top Road, Weatherford at 6 pm. Please RSVP!

April 18th - Showmanship

May 16th - Record keeping

Show Deadlines

PCLIA Market Tag-in - 5/6

PCLIA Market & Breeding Show - 5/29

Parker County Rabbit Project Facebook Page:

<https://www.facebook.com/groups/1053251702715660>

## MARKET RABBIT:

### DIFFERENT MARKET BREEDS

Almost any breed of rabbit can be used for meat, but some produce better than others. Certain breeds produce larger litters than others, which can be beneficial in a large-scale production. Other things to consider include weather tolerance, overall size, and rate of growth. The two most popular market breeds are Californians and New Zealand. Both of these breeds grow to their best meat potential in 70-100 days and have large litters. Some other common market breeds are Champagne D'Argent, Satin, Rex, and Silver Fox. Many breeders who raise market rabbits outside of the show arena will cross-breed rabbits to get better meat qualities from different breeds.

# LONESOME DOVE SHOWDOWN APRIL 27, 2024

TEXAS  
EXHIBITORS  
ONLY

**Location: Parker County Sheriff's Posse Grounds  
2000 Greenwood Rd., Weatherford, Texas**

**Steer Registration Due by 8AM, Steer Show Begins at 10AM. Heifer Registration Due by 11AM. Registration Opens at 6:30AM**

## **Steers \$30**

Shown by Weight and Division  
Divisions: American, British and Exotic  
Subject to 5% Weigh Back  
**Judge: Bill Cody**

## **Heifers \$30**

Shown by Age and Division  
Divisions: American, British, and Exotic  
Under 30 months of age  
Heifer Show will Follow Steer Showmanship  
**Judge: Bill Cody**

**Lamb and Swine Registration Due by 8AM, Lamb and Swine Shows Begin at 10AM. Goat Registration Due by 11AM. Registration Opens at 6:30AM**

## **Market Lambs \$30**

Shown by Weight and Breed  
Breeds: SD, FW, FWX, Hair  
Sheep and MW  
Subject to 5lb Weigh Back  
Ewes Welcome Judged as Market  
**Judge: Dakota Quickle**

## **Market Goats \$30**

Shown by Weight  
Divisions: Light, Middle and  
Heavyweight  
Subject to 5lb Weigh Back  
Does Welcome Judged as Market  
**Judge: Dakota Quickle**  
Goat Show will Follow Lamb Showmanship

## **Market Swine \$30**

Shown by Weight and Breed  
Breeds: BOPB, WOPB, Berk,  
Duroc, York, Hamp,  
White Cross, and Cross  
Subject to 10lb Weigh Back  
Gilts Welcome Judged as Market  
Boars 125lbs or less  
**Judge: Todd Vinyard**

**Rabbit and Poultry Registration Due by 8AM, Rabbit and Poultry Show Begins at 10AM. Registration Opens at 6:30AM**

## **Breeding Rabbits \$5**

Shown by Class Division  
4-Class  
6-Class  
All Breeds Shown Together  
**Judge: Jennifer Schimpf**

## **Breeding Poultry \$5**

Shown by Class Division  
Bantam  
Standard  
All Breeds Shown Together  
There will be separate classes for cock, hen, cockerel and pullets  
Negative pullorum-typhoid test within the past thirty days.  
Texas Origin Birds Only  
**Non-APA Judge: Michelle Burns**

**Showmanship is included with entry will follow each show**

## **Beef, Lamb, Goat and Swine Awards**

Buckles and Banners to Overall Grand and Reserve Champion  
Banners and Custom Prizes to all Division and Reserve Division Champions  
Buckles to all Showmanship Champions

## **Rabbit and Poultry Awards**

Buckles to Grand Champion  
Banners to Reserve Champion, Division and  
Showmanship Champions

## **Showmanship (included with entry)**

Junior - K-5th Grade  
Intermediate - 6th-8th Grade  
Senior - 9th-12th Grade

## **Contact:**

**817-598-6172**

**tiffany.johnston@ag.tamu.edu**

TEXAS  
EXHIBITORS  
ONLY



# GARNER FFA Livestock Show

## Swine:

York, Berk, Hamp, Duroc, WOPB, BOPB, Dark Cross, Light Cross  
Judge: Savanna Williams

## Sheep:

Fine Wool, Fine Wool X, South  
Down, Medium Wool, Dorper  
Judge: Brad Johnson

## Goats:

Lite, Medium and  
Heavyweight Divisions  
Judge: Dave Marcarth

## Cattle:

American, British & Exotic Divisions  
Judge: Connor Hardy

Buckles for Grand/Reserve Overall  
Species & Grand Showmanship.

Banners for Breed Grand/Reserve &  
Reserve Showmanship.

No Out of State Exhibitors

**25 Buckles**  
**59 Banners**

Show Date: April 6th-7th 2024

Register now via The Showman App  
Registration 6:30AM-8AM

Parker County Sheriff's Posse Show Pavilion  
Weatherford, TX

CONTACT: JD LEWIS 817-771-8644



# Weatherford SHOWDOWN



HOSTED BY:

Friends of the Weatherford FFA Booster Club

## APRIL 13-14, 2024



### Parker County Sheriff's Posse

2551 Mineral Wells Hwy, Weatherford, TX



13th

Lamb (Breeding & Market)

Goats (Breeding & Market)

Swine

— RING A —

**Banners & Prizes**



\$40 day of show

14th

Heifers

Steers

Rabbits

— RING B —

**Buckles 40+ & Prizes**

**Texas Livestock ONLY**

**MUST SHOW IN RING A TO SHOW IN RING B**

\$6 early reg for rabbits and \$7 day of show

For other questions please contact us via the website.

Register through our website [www.fowboosterclub.com](http://www.fowboosterclub.com).

Early Registration: February 1st through April 11th.

All other information and Judges will be listed on our Facebook page and website.

Weatherford Showdown Jackpot 2024 | 817-601-1332



**BEYOND**  
THE RING  
Sanctioned Show



# Springtown Buckle Blowout

## 05/11/24

TRAILER SPOTS  
AVAILABLE

TEXAS ANIMALS ONLY  
NO DOGS

BOOTS & BUCKLES!  
OVER 60 BUCKLES  
MORE TO COME!

Parker County Show Grounds  
2251 Mineral Wells Hwy Weatherford, TX 76088



Steers/Heifers

Div: American, British, Exotic  
Steers shown by weight  
Heifers shown by age  
Under 30 months  
Judge- Rachelle Lyman



Goats

Shown by weight  
Light, Medium, Heavy  
Judge- Kurt Henry

SHOW FROM TRAILER  
PENS AVAILABLE

### Showmanship

Will start at 4pm for  
Steer, Swine, & Lamb.

Goat to follow Lamb Show  
Heifer to follow Steer show  
Peewee 8yrs & under  
Junior 9yr-13yr  
Senior 14yr-18yr  
Old-timer 19yr+

\$40 Per head,  
Includes

Showmanship  
Old-timers pay  
\$10 @ Gate  
Registration  
12:30-3pm



Lambs

Shown by breed &  
weight  
FW, FWX, SD, Dorper,  
MW  
Judge- Kurt Henry



Swine

Shown by breed & weight  
WOPB, DOPB, Duroc, Berk,  
York, Hamp, Light Cross,  
Dark Cross  
Judge- Cooper Phillips

CONCESSIONS AVAILABLE

Contacts: Cattle- Roy Stephens 940.255.2136 Swine- Chance Kanode 970.371.4621  
Sheep/Goats Corey Altom- 817.304.4433



# 4-H STEM PROJECT

[Monday, April 15th @6PM @ Extension Office](#)

Click the meeting date to RSVP. Please RSVP by Noon the day before the meeting for planning purposes.

[Follow Us on Facebook](#)

# STEM NEWSLETTER

BY: FINLEY VAN DYK

## What is Astronomy?

Astronomy is the study of everything in the universe beyond Earth's atmosphere. That includes objects we can see with our naked eyes, like the Sun, the Moon, the planets, and the stars. It also includes objects we can only see with telescopes or other instruments, like faraway galaxies and tiny particles. And it even includes questions about things we can't see at all, like dark matter and dark energy.



During the Middle Ages, the science of astronomy continued to advance in Asia and the Islamic world. Islamic scholars kept building on the knowledge of the Ancient Greeks, expanding the catalog introduced by Hipparchus. They also developed new tools for measuring the positions of objects in the sky such as the quadrant and the sextant, according to ESA. Those who study astronomy explore the universe's structure and origin, including the stars, planets, galaxies, and black holes that reside in it. Astronomers aim to answer fundamental questions about our universe through theory and observation.

## EVENTS TO WATCH FOR!

### APRIL 20: JUPITER AND URANUS A HALF-DEGREE APART

By this time, the planet Jupiter will have been dominating the western sky after sunset for months and will easily be the brightest object in the sky in that direction. Uranus, on the other hand, will be around magnitude 6.0, so you'll need binoculars or a small telescope to spot it. But on this day the two planets will be 0.5 degree apart, making a delightful pair. Look west after sunset, when the sky will be fully dark. Uranus will be the greenish "star" to the right of Jupiter.

## Upcoming Meetings!

The next meeting is on April 15th at 6 PM, the topic is Astronomy and Photography of the night sky!



# 4-H CLUB NEWS

*Join the Club*

April 2024

# Aledo 4-H Newsletter



## UPCOMING DATES:

The next meeting for the Aledo 4-H Club is April 8th at the Aledo Community Center. Clovers start at 6:30 PM and the general meeting starts at 7 PM.

The next STEM Project meeting is April 15th at 6 PM.

The next Rabbit Project meeting is on April 18th at 6 PM.

Please send out our flower fundraiser to friends and family! This fundraiser ends in May! <https://www.flowerpowerfundraising.com/index.php/marketplace/seller/profile/shop/aledo4hclub>

This month's Spotlight is on Case Rider! Case has been in 4-H 1 year and is in the Food Nutrition, STEM, and archery projects. His goal is to start the Entomology project, and his favorite thing about 4-H is how 4-H is really interactive, fun, and full of friendly people.

## COMMUNITY SERVICE FOR APRIL:

Look out for details for our next service project, The City Of Weatherford's "Spring Clean"!

**WEATHERFORD**  
MASSIVE **SPRING CLEAN** IN APRIL

Let's rally together to achieve our goal of engaging 100 organizations. Together, we've already cleared an impressive 14 tons of waste. Let's make our city shine!

**A Clean Weatherford in 30 Days!**

**GET YOUR ORGANIZATION INVOLVED!**

**Have your organization sign up today!**

Each organization picks the day and time to pick up trash. Spend only 1-2 hours anywhere within city limits or even out in the countryside. Your organization supplies the time. Love Weatherford supplies the rest! This includes picker/grabber tools, garbage bags, gloves, safety vest, etc. We also haul everything off!

**The Month of April, you pick the time!**

Sign Up: Facebook:

Call: Jeff Dukes (800) 905-4322 | Email: Jeff@LoveWeatherford.org

April 2024

# SPRINGTOWN

*4-H Club*

**APRIL 2**

**STEM: 5:30PM**

**Clovers: 6:30pm**

**General Meeting: 7pm**

Earth Day Community  
Service- Trash pick  
up:

April 21st  
4pm @ Springtown  
Park



**May Meeting & End of Year  
Party**

May 7th

Potluck style dinner! Bring your  
favorite dish to share!

**OFFICER ELECTIONS WILL BE HELD AT MAY MEETING**



[facebook.com/springtown4h](https://facebook.com/springtown4h)



[springtown4h@gmail.com](mailto:springtown4h@gmail.com)

Reporter: Emma Hauprich

# March Newsletter

Your monthly newsletter from  
Weatherford Day 4-H

## April Meeting

In our upcoming April meeting, we will discuss the officer leadership roles.

## Community Service in March

This month, we collected size 5 diapers and wipes for Grace House Ministries. Our total number was 9 diaper and 8 wipe packages.



Visit our  
Facebook page  
for periodical  
updates!

## This Month in March

This month at Weatherford Day, we had Mrs. Karen Brauhn from the Master Gardeners come speak on growing plants in any containers.

We then got to take home a grow bag and seeds to be able to grow seeds even in the most urban of areas.



## Reminders

Monthly meeting - April 18

Jr. Master Gardeners - April 25th

To become an officer in 2024-2025 or for more info, message Mr. Brennan Spikes, our club manager.



18 U.S.C. 707